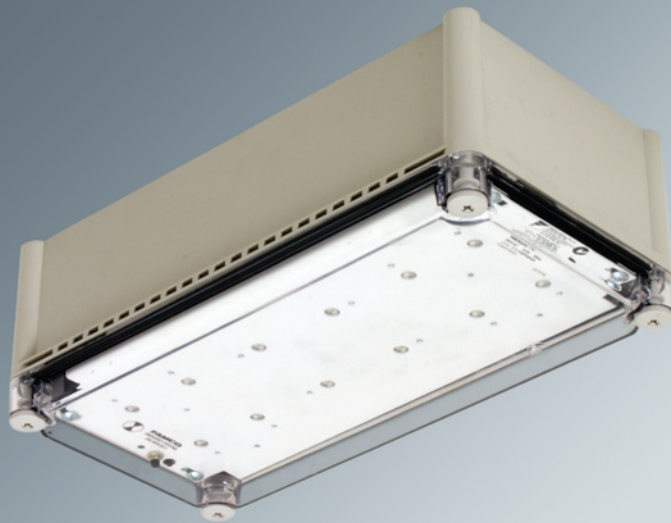


# Freeze-Lite

LED Freezer/Coolroom Emergency Luminaire



## Catalogue No:

**F9937L/WP/LT**

## Description:

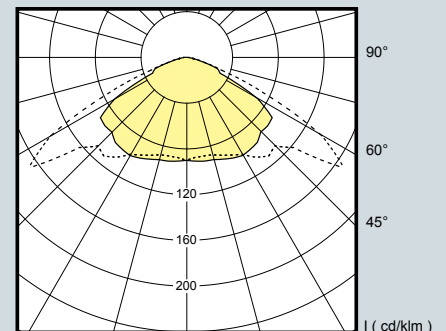
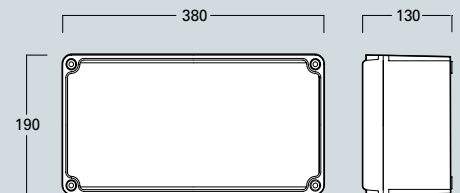
Surface mounted LED emergency luminaire. Designed for use in freezers, cool rooms, operating range **-30°C to +20°C**. Housed in IP67 rated weatherproof, polycarbonate impact resistant enclosure.

## Emergency classification:

C0:D40 C90:D40

## Options:

- Famco Masterminder monitoring and control system connectivity
- Available as standard non-emergency luminaire
- /RMS Available as a maintained Exit
- /RG Remote emergency pack available



MAXIMUM PERMISSIBLE SPACING FOR EMERGENCY LUMINAIRES																	
PHOTOMETRIC CLASSIFICATION		MOUNTING HEIGHT - M															
		2.1	2.4	2.7	3.0	3.3	3.6	4.0	4.5	5	6	7	8	9	10	15	20
<b>F9937L/WP/LT</b>	C0	D40	16.7	17.4	18.0	18.6	19.1	19.6	20.1	20.8	21.3	22.1	22.7	23.0	23.1	23.1	19.4
		D40	16.7	17.4	18	18.6	19.1	19.6	20.1	20.8	21.3	22.1	22.7	23.0	23.1	23.1	19.4

**FAMCO LIGHTING PTY LTD**

T: (03) 9935 7300 F: (03) 9935 7301 E: info@famco.com.au W: www.famco.com.au

© 2010 Famco Lighting Pty Ltd All rights reserved. E&OE. Subject to change without notice, to allow progress in design. This document and the information it contains is the property and copyright of Famco Lighting Pty Ltd and must not be used, copied, transmitted or reproduced without our written permission.



LUMINAIRE DESIGNERS, MANUFACTURERS & SUPPLIERS