

# Viking IP65

## WEATHERPROOF BATTEN

The Famco Viking series of weatherproof, adverse environment luminaires for use in high humidity, dampness, dust and/or corrosive locations.

### APPLICATIONS:

Wherever a dust & water resistant fitting is required.

- Car parks
- Building sites
- Food premises
- Chemical plants
- Hose down areas
- Railway areas
- Security areas
- Factories
- Public buildings
- Swimming pools

### CONSTRUCTION

Polyester compression moulded body, glass reinforced (GRP)

Built in gasket

Prismatic lens with internal prism, smooth outer surface, injection moulded with sharp sealing ridges against gasket.

IP65 rated

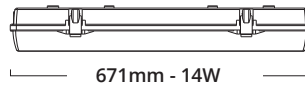
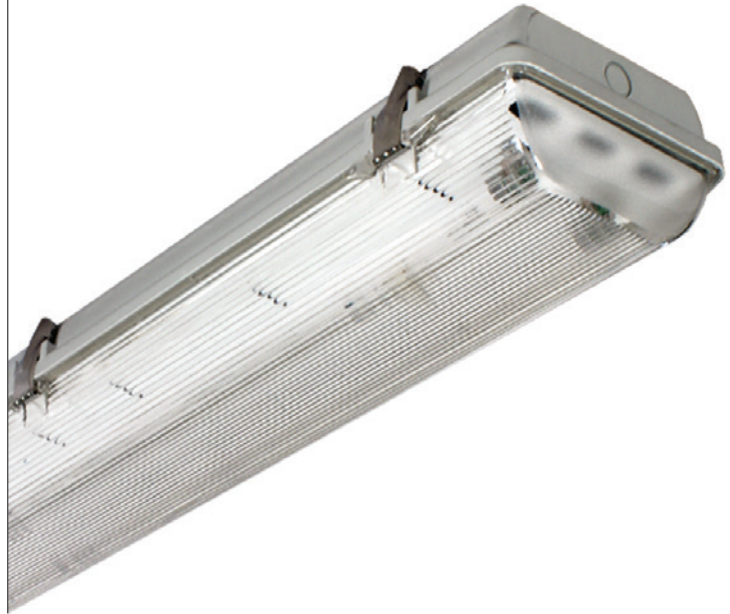
Grommets supplied for cable entry at both ends.

Stainless steel toggle clips 316 grade

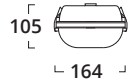
Polycarbonate lens

Supplied with electronic ballasts

Complies with AS/NZS 60598.1 and CISPR15

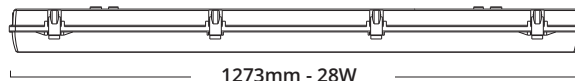


671mm - 14W

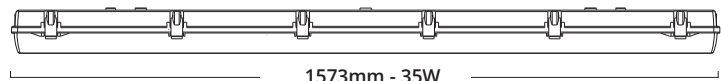


105

164

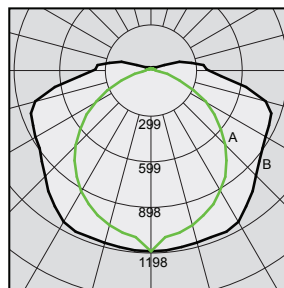


1273mm - 28W



1573mm - 35W

|            |       |    |
|------------|-------|----|
| FV98114/WD | 1x14W | T5 |
| FV98128/WD | 1x28W | T5 |
| FV98135/WD | 1x35W | T5 |
| FV98214    | 2x14W | T5 |
| FV98228    | 2x28W | T5 |
| FV98235    | 2x35W | T5 |



FV98218 2X28W

Maximum Candela = 1197.89 Located At Horizontal Angle = 25, Vertical Angle = 5

A. Vertical Plane Through Horizontal Angles (0 - 180)

B. Vertical Plane Through Horizontal Angles (90 - 270)

Also available as emergency lighting version

Photometric data available at:

[famco.com.au/product/viking-ip65](http://famco.com.au/product/viking-ip65)

FAMCO LIGHTING PTY LTD

T: (03) 9935 7300 F: (03) 9935 7301 E: [info@famco.com.au](mailto:info@famco.com.au) W: [www.famco.com.au](http://www.famco.com.au)

© 2014 Famco Lighting Pty Ltd. All rights reserved. E&OE. Subject to change without notice, to allow progress in design. This document and the information it contains is the property and copyright of Famco Lighting Pty Ltd and must not be used, copied, transmitted or reproduced without our written permission.

